

# Panasonic

## Quick Reference Guide

---

IP Proprietary Telephone  
Model No. **KX-NT630/KX-NT680**

Thank you for purchasing an IP Proprietary Telephone (IP-PT). Please read this manual carefully before using this product and save this manual for future use. For more details, please refer to the manuals of the PBX.

Manuals and supporting information are provided on the Panasonic Web site at:  
**<https://panasonic.net/cns/pcc/support/pbx/>**

### Note

- In this manual, the suffix of each model number (e.g., KX-NT630**NE**) is omitted unless necessary.
- The illustrations may differ from the appearance of the actual product.

### Open Source Software Notice

Parts of this product use open source software. For details about the open source software, refer to the following Web site at:  
**<https://panasonic.net/cns/pcc/support/pbx/>**

### Trademarks

- The Bluetooth® word mark and logos are owned by the Bluetooth SIG, Inc. and any use of such marks by Panasonic Corporation is under licence.
- All other trademarks identified herein are the property of their respective owners.

### **For Users in the United States**

- This equipment has been tested and found to comply with the limits for a Class B digital device, pursuant to Part 15 of the FCC Rules. These limits are designed to provide reasonable protection against harmful interference in a residential installation. This equipment generates, uses, and can radiate radio frequency energy and, if not installed and used in accordance with the instructions, may cause harmful interference to radio communications. However, there is no guarantee that interference will not occur in a particular installation. If this equipment does cause harmful interference to radio or television reception, which can be determined by turning the equipment off and on, the user is encouraged to try to correct the interference by one or more of the following measures:
  - Reorient or relocate the receiving antenna.
  - Increase the separation between the equipment and receiver.
  - Connect the equipment to an outlet on a circuit different from that to which the receiver is connected.
  - Consult the dealer or an experienced radio/TV technician for help.This device complies with Part 15 of the FCC Rules. Operation is subject to the following two conditions:

(1) this device may not cause harmful interference, and (2) this device must accept any interference received, including interference that may cause undesired operation.

### **WHEN PROGRAMMING EMERGENCY NUMBERS AND/OR MAKING TEST CALLS TO EMERGENCY NUMBERS:**

- %<sup>1</sup> Remain on the line and briefly explain to the dispatcher the reason for the call before hanging up.
- &<sup>2</sup> Perform such activities during off-peak hours, such as early morning or late evening.

### **CAUTION**

Any changes or modifications not expressly approved by the party responsible for compliance could void the user's authority to operate this product.

### **FCC RF Exposure Warning:**

- This product complies with FCC radiation exposure limits set forth for an uncontrolled environment.
- To comply with FCC RF exposure requirements, this product must be installed and operated 20 cm (8 inches) or more between the product and all person's body.
- This product may not be collocated or operated in conjunction with any other antenna or transmitter.

FCC ID can be found on the bottom of the units.

Privacy of communications may not be ensured when using this phone.

### **Hearing Aid Compatibility**

This telephone provides magnetic coupling for hearing aids as defined by the FCC in 47 CFR Section 68.316. Use only handsets or other acoustic devices with this equipment that are compliant with the hearing aid compatibility requirements of FCC Part 68.

When you hold the phone to your ear, noise might be heard in your Hearing Aid. Some Hearing Aids are not adequately shielded from external RF (radio frequency) energy. If noise occurs, use an optional headset accessory or the speakerphone option (if applicable) when using this phone. Consult your audiologist or Hearing Aid manufacturer about the availability of Hearing Aids which provide adequate shielding to RF energy commonly emitted by digital devices.

### **Compliance with TIA-1083 standard:**

Compatible with  
Hearing Aid T-Coil



Telephone handsets identified with this logo have reduced noise and interference when used with T-Coil equipped hearing aids and cochlear implants.

#### **Responsible Party**

Panasonic Corporation of North America  
Two Riverfront Plaza, Newark, New Jersey 07102-5490

#### **Technical Support**

Panasonic Corporation of North America  
Two Riverfront Plaza, Newark, New Jersey 07102-5490  
Telephone: 1 (800) 528-6747 Option 1

### **For Users in Canada**

#### **Industry Canada Notices and Other Information**

This product meets the applicable Innovation, Science and Economic Development Canada technical specifications.

#### **Notice**

- This device complies with Industry Canada licence-exempt RSS standard(s). Operation is subject to the following two conditions: (1) this device may not cause interference, and (2) this device must accept any interference, including interference that may cause undesired operation of the device.
- This Class B digital apparatus complies with Canadian ICES-003.

#### **CAUTION**

- Any changes or modifications not expressly approved by the party responsible for compliance could void the user's authority to operate this product.

#### **Compliance with TIA-1083 standard:**



Telephone handsets identified with this logo have reduced noise and interference when used with T-Coil equipped hearing aids and cochlear implants.

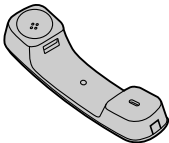
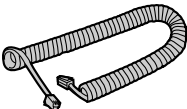
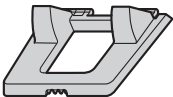
#### **RF Exposure Warning:**

- This product complies with IC radiation exposure limits set forth for an uncontrolled environment.
- To comply with IC RF exposure requirements, this product must be installed and operated 20 cm (8 inches) or more between the product and all person's body.
- This product may not be collocated or operated in conjunction with any other antenna or transmitter.

Privacy of communications may not be ensured when using this phone.

# Accessory Information

## Included Accessories

Handset (1)	Handset Cord (1)	Stand (1)
		

### Note

- The illustrations may differ from the appearance of the actual product.

## Optional Accessories

Model	AC adaptor*1	Wall Mount Kit
KX-NT630NE/ KX-NT680NE	KX-A424CE (PNLV6508)	KX-A435NE
KX-NT630/ KX-NT680	KX-A424 (PNLV6508)	KX-A435
KX-NT630C/ KX-NT680C	KX-A424 (PNLV6508)	KX-A435
KX-NT630X/ KX-NT680X	KX-A424CE (PNLV6508)/ KX-A424E (PNLV6508)/ KX-A424AG (PNLV6508)/ KX-A424BR (PNLV6508)/ KX-A424X (PNLV6508)/ KX-A424AL (PNLV6508)/ KX-A424TW (PNLV6508)	KX-A435X
KX-NT630UK/ KX-NT680UK	KX-A424CE (PNLV6508)/ KX-A424E (PNLV6508)	KX-A435NE
KX-NT630RU/ KX-NT680RU	KX-A424CE (PNLV6508)	KX-A435X
KX-NT680MS	KX-A424E (PNLV6508)	KX-A435X

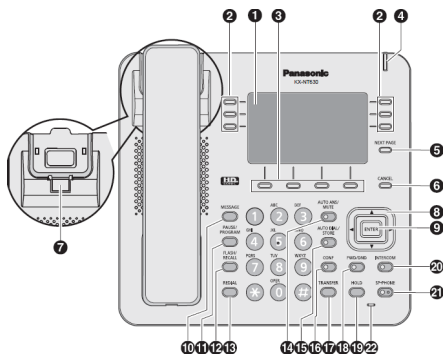
KX-NT680SX	KX-A424SX (PNLV6508)	KX-A435SX
------------	----------------------	-----------

- \*1 This unit complies with the IEEE 802.3af Power-over-Ethernet (PoE) standard. If PoE is available on your network, this unit can receive the necessary power from the network through the Ethernet cable. In this case, no AC adaptor is needed.

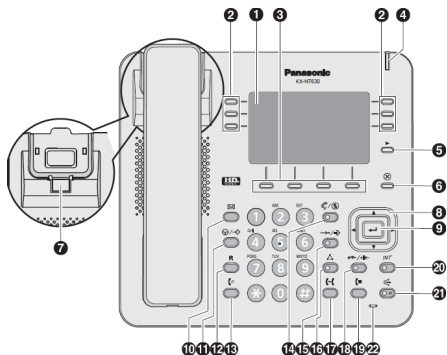
To order an optional AC adaptor, please order using the "KX-A424xx" model number. For details about which AC adaptor model number you should order, consult your dealer.

# Location of Controls

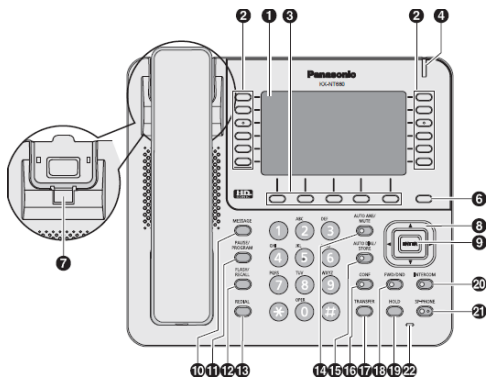
## KX-NT630



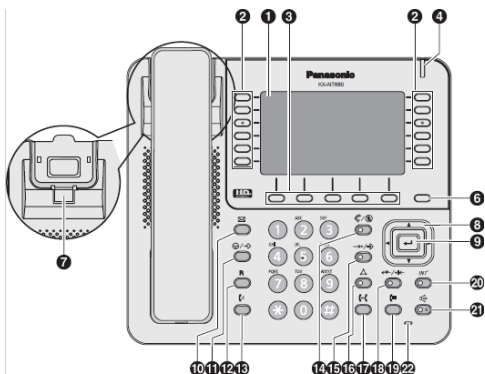
## KX-NT630C






## KX-NT680



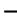









## KX-NT680C





- ❶ **LCD (Liquid Crystal Display):**  
KX-NT630: 3.6 inch monochrome, 6 lines,  
KX-NT680: 4.3 inch color
- ❷ **Flexible key:** Used to seize an outside line or perform a feature that has been assigned to the key.
- ❸ **Soft Buttons (KX-NT630:S1-S4, KX-NT680:S0-S4):**  
Soft Buttons (located from left to right) are used to select the item displayed on the bottom line of the display.
- ❹ **Message/Ringer Lamp:** When you receive an intercom call, the lamp flashes green, and on an outside call, the lamp flashes red. When someone has left you a message, the lamp stays on red.
- ❺ **NEXT PAGE Key:** Used to switch the page for the Flexible key. (KX-NT630 only)
- ❻ **CANCEL:** Used to cancel the selected item.
- ❼ **Handset Hook:** Keeps the handset stable when the unit is mounted on a wall.
- ❽ **Navigator Key:** Used to adjust the volume and the display contrast (KX-NT630) and the display backlight (KX-NT680) or select desired items.
- ❾ **ENTER:** Used to assign the selected item.
- ❿  **(MESSAGE):** Used to leave a message waiting indication or call back the party who left the message waiting indication.
- ⓫  **(PAUSE)/(PROGRAM):** Used to insert a pause when storing a telephone number. This button is also used for programming this unit.
- ⓬ **R(FLASH/RECALL):** Used to disconnect the current call and make another call without hanging up.
- ⓭  **(REDIAL):** Used to redial the last dialled number.

- 14  /  (**AUTO ANS/MUTE**): Used to receive an incoming call in hands-free mode or mute the microphone/handset during a conversation.
- 15  /  (**AUTO DIAL/STORE**): Used for System/Personal Speed Dialling or storing programme changes.
- 16  (**CONF**): Used to establish a multiple party conversation.
- 17  (**TRANSFER**): Used to transfer a call to another party.
- 18  /  (**FWD/DND**): Used to switch Call Forwarding or Do Not Disturb on your extension.
- 19  (**HOLD**): Used to place a call on hold.
- 20 **INT' (INTERCOM)**: Used to make or receive intercom calls.
- 21  (**SP-PHONE [Speakerphone]**): Used for performing hands-free operations.
- 22 **Microphone**: Used for hands free conversations.

## Before Operating the Telephone

### Speaker volume

While in a hands-free conversation  
Press [▲] or [▼] to adjust the volume.

### Handset/Headset volume\*1

While using the handset or headset  
Press [▲] or [▼] to adjust the volume.

### Ringer volume

While receiving a call  
Press [▲] or [▼] to adjust the volume.  
While on-hook  
Press [▲] to confirm current volume and Press [▲] or [▼] to adjust the volume.

### LCD Contrast (KX-NT630)/LCD Backlight (KX-NT680)\*2

While on-hook

1. Press the / (PAUSE)/(PROGRAM).
2. Enter 0①.
3. Press [ENTER].
4. Press [▲] or [▼] to adjust the LCD contrast (KX-NT630) or the LCD Backlight (KX-NT680).
5. Press [ENTER].
6. Press [CANCEL].

### Ring Tone

1. Press the / (PAUSE)/(PROGRAM).
2. Press a flexible CO button or [INTERCOM] 2 times.
3. Enter 2 digits (01-30) using the dial keys (0-9), or press [▲] or [▼] to select the ring tone.
4. Press [ENTER].
5. Press [CANCEL].

\*1 If you hear your own voice through the handset or headset, decrease the volume.

## Before Operating the Telephone

---

\*2 Note for KX-NT680.

- The backlight has a lifetime.
- The LCD turns off the light for a moment every 4 hours and it lights again.

### LCD Backlight (KX-NT630 only)

While on-hook

1. Press the / (PAUSE)/(PROGRAM).
2. Enter 04.
3. Press [ENTER].
4. Press a dial key to select the LCD backlight mode.
  - 0: Automatic
  - 1: Always ON
  - 2: Always OFF
5. Press [ENTER].
6. Press [CANCEL].

### Registering the Bluetooth® headset (KX-NT680 only)

1. Set the Bluetooth headset to pairing mode by following the instructions provided with the headset.
2. Press the / (PAUSE)/(PROGRAM).
3. Enter 66.
4. Press [ENTER].
5. Enter the Pass Key and press [ENTER].\*1
6. Press [CANCEL].

### Confirming the ID of the Bluetooth headset and deregistering the Bluetooth headset (KX-NT680 only)

1. Press the / (PAUSE)/(PROGRAM).
2. Enter 67.
3. Press [ENTER].\*2\*3
4. Press [ENTER] to deregister the headset.
5. Press [CANCEL].

\*1 For more information regarding the Pass Key of your headset, refer to the operating instructions of your headset.

- \*2 Confirm that the displayed ID is the ID of your headset. For more information regarding the ID of your headset, refer to the operating instructions of your headset.
- \*3 If you do not wish to perform deregistration, press [CANCEL] 3 times.

## **Feature Operations**

---

### **Making Calls**

#### **Calling**

##### **[To an extension]**

1. Go off-hook.
2. Dial an extension number.

##### **[To an outside party]**

1. Go off-hook.
2. Press a flexible CO button.
3. Dial the outside party's phone number.

#### **Redial**

1. Go off-hook.
2. Press [REDIAL].

#### **Quick Dialling**

1. Go off-hook.
2. Dial a quick dialling number.

#### **Doorphone Call**

1. Go off-hook.
2. Enter \*③①.
3. Enter a doorphone number (2 digits).
4. After the confirmation tone, talk.

#### **System Speed Dialling**

1. Go off-hook.
2. Press [AUTO DIAL/STORE].
3. Enter a system speed dialling number (3 digits).

## Personal Speed Dialling

### 【To store】

1. Go off-hook.
2. Enter **\*30**.
3. Enter a personal speed dialling number (2 digits).
4. Enter the phone number to store (max. 32 digits).<sup>\*1</sup>
5. Press **#**.
6. After the confirmation tone, go on-hook.

### 【To dial】

1. Go off-hook.
2. Press [AUTO DIAL/STORE].
3. Enter **\***.
4. Enter a personal speed dialling number (2 digits).

## One-touch Dialling

### 【To store】

1. Press the / (PAUSE)/(PROGRAM).
2. Press a flexible CO button.
3. Enter **2**.
4. Enter the number to store (max. 32 digits).<sup>\*1</sup>
5. Press [ENTER].
6. Enter the text to store (max. 12 digits).
7. Press [ENTER].
8. Press [CANCEL].

### 【To dial】

1. Go off-hook.
2. Press the flexible CO button assigned as a One-touch Dialling button.

<sup>\*1</sup> Enter the outside line access number before an outside phone number.

### During a Conversation

#### Call Hold

##### **[To hold]**

1. Press [HOLD].
2. After the confirmation tone, go on-hook.

##### **[To retrieve a call at the holding extension]**

1. Go off-hook.
2. Press a flexible CO button or [INTERCOM].

##### **[To retrieve an outside call from another extension]**

1. Go off-hook.
2. Press a flexible CO button.

#### Call Transfer

##### **[To an extension]**

1. Press [TRANSFER].
2. After the confirmation tone, dial an extension number.
3. Talk.
4. Go on-hook.

##### **[To an outside party]**

1. Press [TRANSFER].
2. After the confirmation tone, press a flexible CO button.
3. Dial an outside phone number.
4. Talk.
5. Go on-hook.

#### Multiple Party Conversation

##### **[To add other parties during a conversation]**

1. Press [CONF].
2. After the confirmation tone, dial the phone number of the party to add.
3. Talk to the new party.
4. Press [CONF].
5. After the confirmation tone, talk with multiple parties.

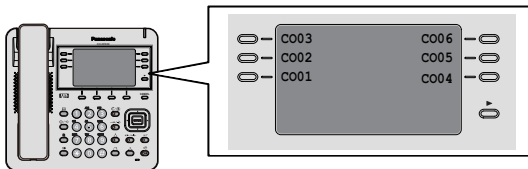
##### **[To leave a conference]**

1. Press [CONF].
2. After the confirmation tone, go on-hook.



## Self Labelling

The KX-NT630 features 6 flexible buttons (KX-NT630)/12 flexible buttons (KX-NT680) around an LCD screen. Each item can be named on the LCD screen through personal or system programming to reflect the function of its corresponding flexible button. Additionally, the flexible buttons can be organised into 4 “pages”, allowing you to assign a total of 24 items (KX-NT630)/48 items (KX-NT680).



### Storing a One-touch Dialling button, and setting the displayed text for the Self Labelling LCD Display

1. Press the **PROG** soft button (S1).
2. Press a flexible CO button, or press the NEXT PAGE key (KX-NT630)/Soft buttons:S5(KX-NT680), and then press a flexible CO button.
3. Enter ②.
4. Enter the number to store (max. 32 digits).<sup>\*1</sup>
5. Press [ENTER].
6. Enter the text to store (max. 12 digits).
7. Press [ENTER].
8. Press [CANCEL].

<sup>\*1</sup> Enter the outside line access number before an outside phone number.

## Bluetooth Specification (KX-NT680 only)

Frequency Band: 2.402 GHz to 2.480 GHz  
Maximum Power Output: 2.5 mW

# Installation and Setup

### Note

- Panasonic assumes no responsibility for injuries or property damage resulting from failures arising out of improper installation or operation inconsistent with this documentation.

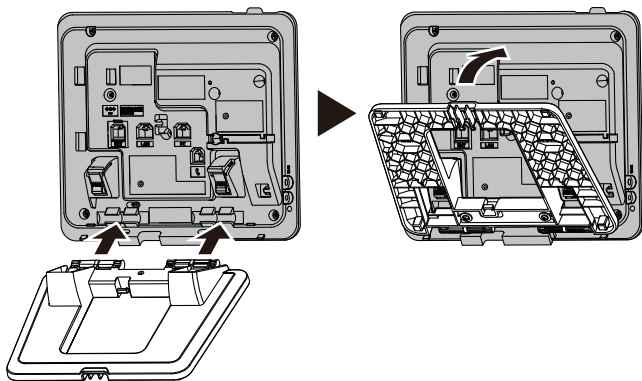
---

## Attaching the Stand

### Note

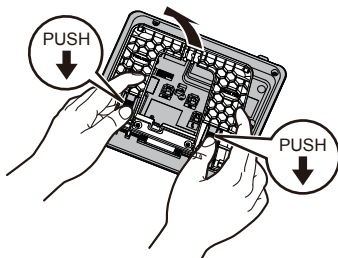
- If you place the display face down when you attach the stand, be sure to place a soft cloth under the display. Failure to do so may result in damage to the display.

- 1 Insert the stand into the slots located in the unit.
- 2 Gently rotate the stand in the direction indicated until it is fixed.



### Removing the Stand

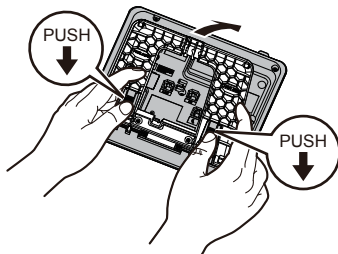
Tilt the stand in the direction indicated while pushing the PUSH marks with both hands.



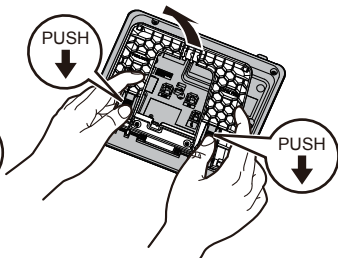
### Adjusting the Stand Position

Push the PUSH marks in the direction indicated, with both hands, and tilt and slide the stand until it becomes fixed in the desired position.

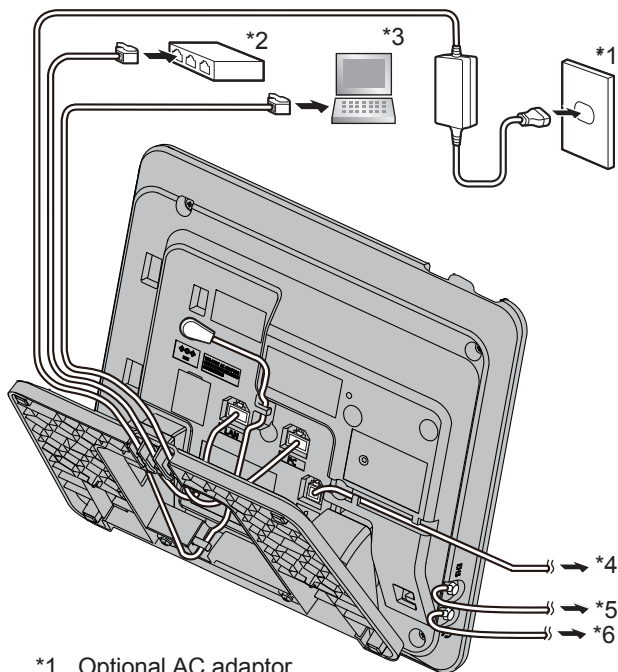
**Lowering the stand**



**Raising the stand**



### Connections



- \*1 Optional AC adaptor
- \*2 PoE HUB
- \*3 LAN cable
- \*4 To a handset
- \*5 To an optional EHS handset (KX-NT680 only)
- \*6 To an optional handset

### CAUTION

#### Optional AC Adaptor

- Use a Panasonic AC adaptor (Page 4).

- The AC adaptor is used as the main disconnect device. Ensure that the AC outlet is installed near the unit and is easily accessible.

### When connecting a headset

- Ensure that the headset cord has slack and is not pulled tight during use to prevent damage to the connectors.
- Cords used to connect devices to the EHS jack or headset jack must be less than 3 m in length. (KX-NT680 only)

#### Note

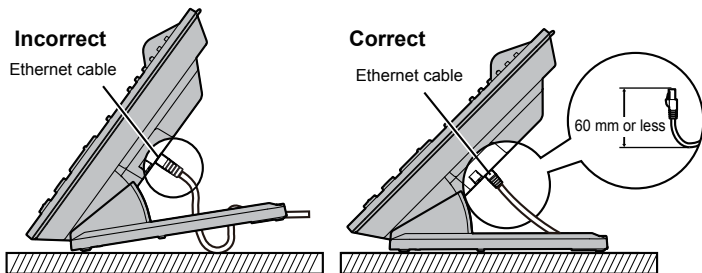
- For up-to-date information about headsets that have been tested with this unit, refer to the following web site:  
<https://panasonic.net/cns/pcc/support/pbx/>

### When selecting Ethernet cables (not included)

- Use flexible cables without jack covers. Do not use cables with a hard coating that may tear or crack when bent.

To prevent damage to the cables, use cables that do not protrude from the bottom of the base.

Connect the cables as shown in the following illustration.



- Use a straight CAT 5e (or higher) Ethernet cable (not included) that is 6.5 mm in diameter or less.

### When connecting to a switching hub

- If PoE is available, an AC adaptor is not needed.
- KX-NT630/KX-NT680 complies with the PoE Class 2 standard.

### When connecting a PC

- The PC port does not support PoE for connected devices.

## ***Installation and Setup***

---

### **When connecting cables and the AC adaptor**

- Pass the Ethernet cable and the AC adaptor cord under the stand.

